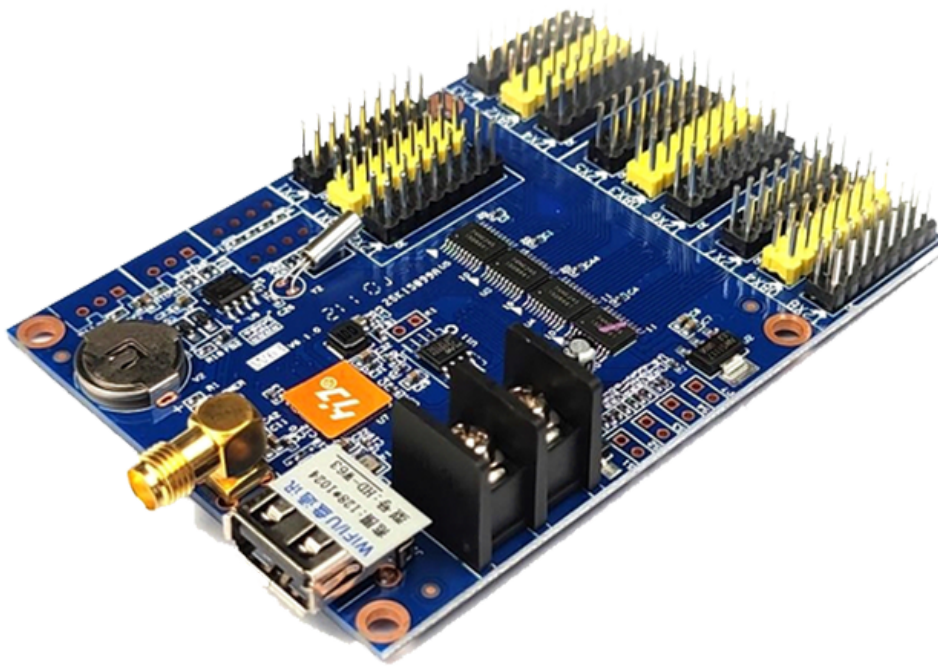


Product Specifications

**Single & dual color Wi-Fi
control card**



HD-W63

Overview

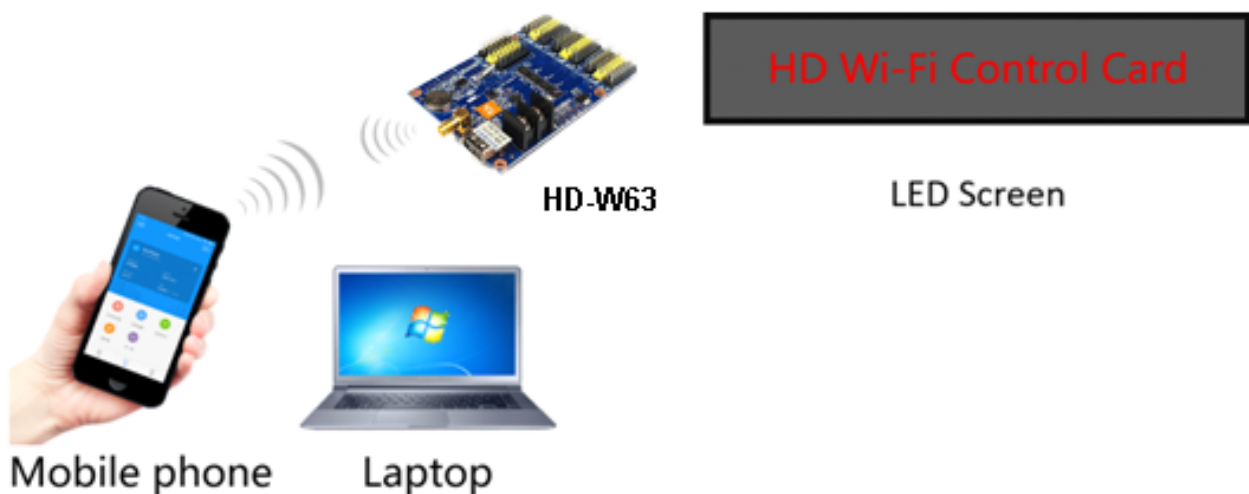
W63 is Wi-Fi control card, update programs by Wi-Fi connected, it has USB port, can also using the U-disk to update the program. Low cost, Cost-effective, simple software interface, easy to operate, better display information, good effect, supports variety kinds of single-color display.

Application software: HD2020, LEDArt.

Connection demo

The mobile phone and laptop can be connected to the Wi-Fi hotspot of the control card to update the program.

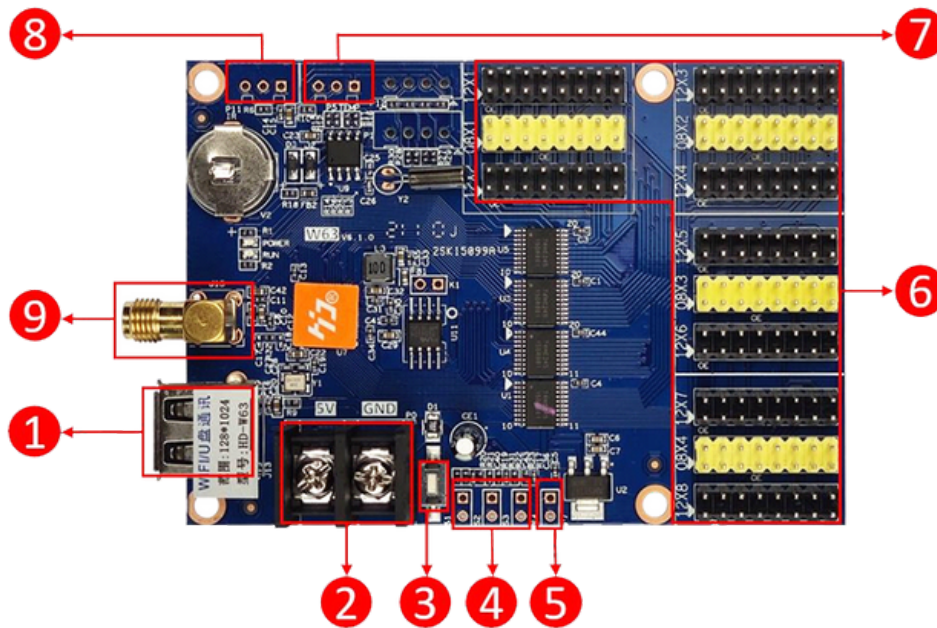
After Wi-Fi controls the card, mobile phones and laptops can connect to the Wi-Fi hotspot of the control card to debug or update programs.



Features:

Content	Performance
Loading capacity	Single color: 1024W*128H, (widest 2048, highest 128 pixels)
Programs quantity	1000
FLASH Capacity	4M Byte
Communication Port	U-Disk、 Wi-Fi
Support Colorful	Full-color module can display red, green, blue, yellow, purple, green, white
Program contents	Support running text, time, count, digit, animation, temperature and humidity, excel, traditional Chinese calendar, offline weather.
Area Quantity	Support MAX 20 areas with separate zone, and separated special effects and border.
Play mode	Play in order, switch by button, switch by IR remote.
Extended Equipment	Temperature, humidity, IR remote, brightness, PM2.5/PM10 etc. sensors
Screen on/off	Support screen on/off by time automatically
Clock function	Support perpetual calendar, analog clock, lunar calendar Counting up and down display The font, font size, color, position, etc. can be set arbitrarily Support multi-time zone display
Brightness adjustment	Support 3 modes: adjust by hand, adjust by sensor automatically, adjust by time automatically.
Product power	3W

Setup Diagram



- ① USB port, to update program content and settings by U-disk.
- ② Power supply connector, to connect 5V power supply.
- ③ Test button, to test LED module.
- ④ S2/S3/S4 switch ports: S2 can be set as a button for next program, timer starts or count plus; S3 can be set as a button for previous program, timer reset or count down; S4 can be set as a button for program control, time pause, count reset.
- ⑤ P7, to connect brightness sensor, adjust brightness automatically.
- ⑥ HUB12/HUB08 port, connect to LED modules by flat cable.
- ⑦ P5, to connect temperature / humidity sensor.
- ⑧ P11, IR remote connector, to connect IR remote sensor.
- ⑨ Wi-Fi antenna port: used to connect with Wi-Fi external antenna.