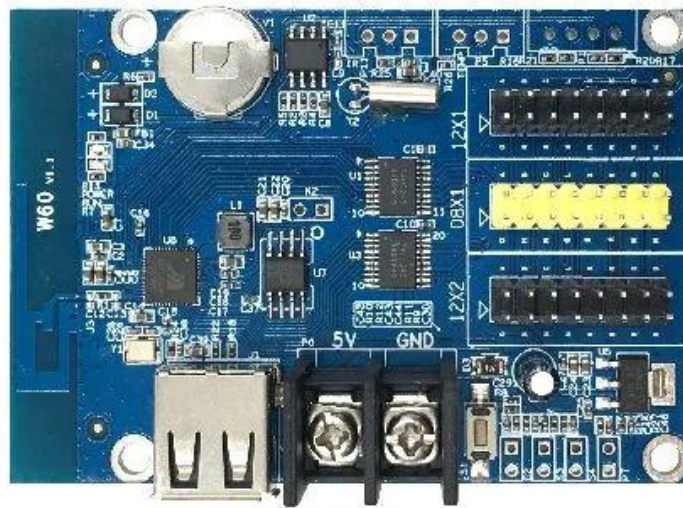


Product Specifications

Single & dual color Wi-Fi control card



HD-W60

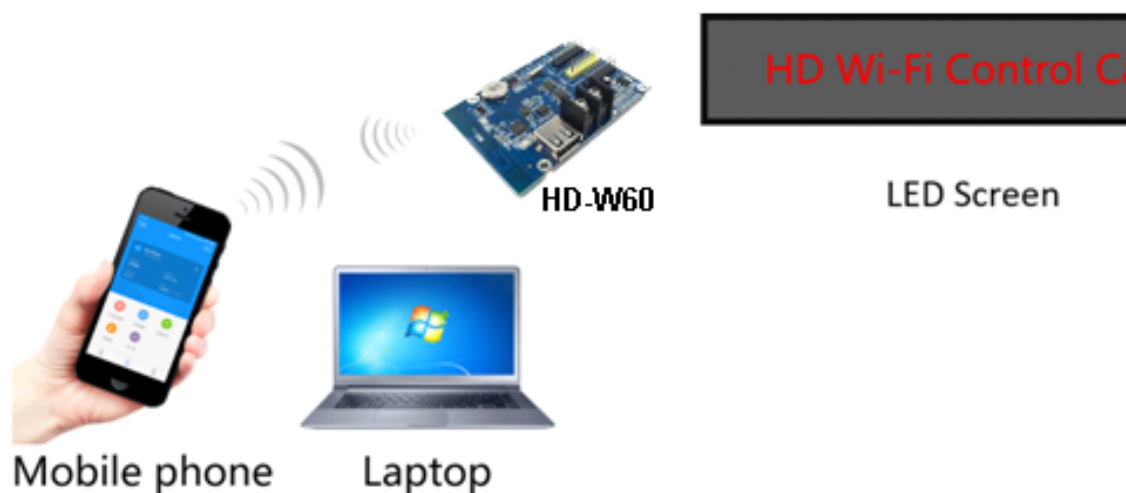
Overview

W60 is Wi-Fi control card, update programs by Wi-Fi connected, it has USB port, can also using the U disk to update the program. Low cost, Cost-effective, simple software interface, easy to operate, better display information, good effect, supports variety kinds of single-color display.

Application software: HD2020, LEDArt.

Connection demo

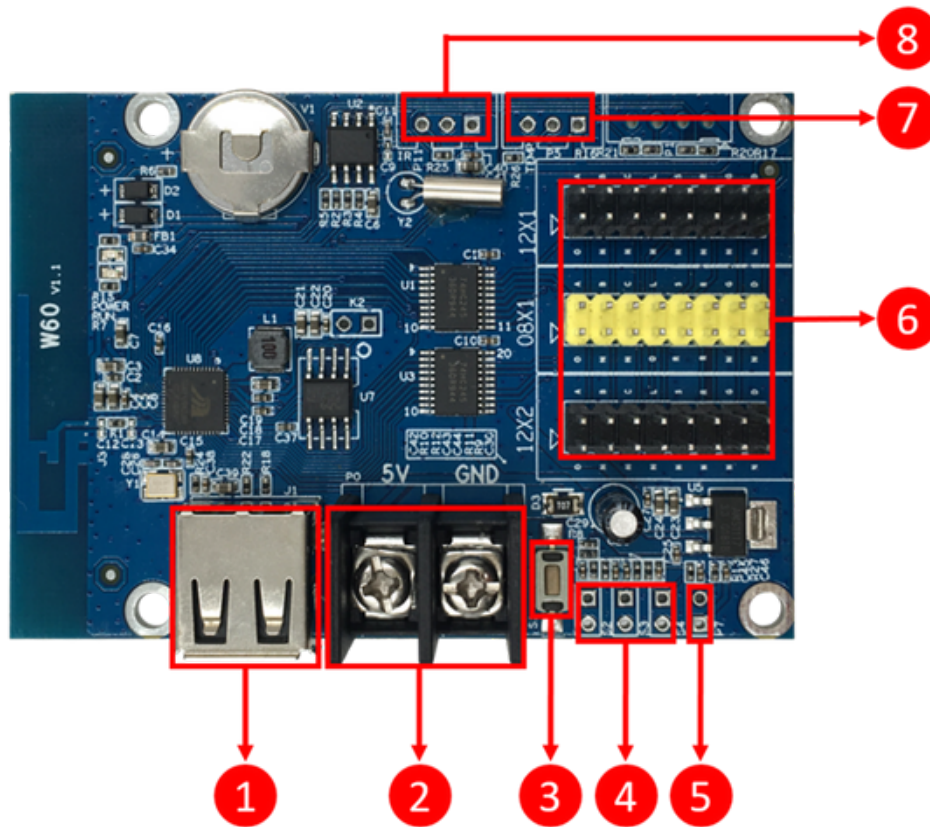
The mobile phone and laptop can be connected to the Wi-Fi hotspot of the control card to update the program.



Functions

Content	Performance
Support module	Single Color/ Dual Color /Tricolor conventional scanning methods
Control range	Single color: 1024*32 Dual color: 512*32
FLASH Capacity	4M Byte
Communication Port	U-Disk、 Wi-Fi
Support Colorful	Full-color module can display red, green, blue, yellow, purple, green, white
Program Quantity	Max 1000pcs Programs. Can play by time section or control by buttons.
Area Quantity	20 areas with separate zone, and separated special effects and border
Display Showing	Text, Picture, 3DText, Animation(SWF), Excel, Timing, Temperatures(humidity), Count, Lunar calendar
Display	Sequence display, button switch, remote control
Extended Equipment	Temperatures, Humidity, IR Remoter, Photosensitive sensors, etc.
Automatic switch screen	Support timer switch machine
Dimming	Support three brightness adjustment mode

Setup Diagram



1. USB ports, Updated programby U-disk
2. Power connector, connect 5V power supply
3. Test button,click to switchscreen test status
4. S2 , Connect the point switch,switch to the next program,the timer starts,count plus. S3 , Connect the point switch, switch the previous program, timer reset, count down. S4, Connect the point switch, program control,timing pause, count reset
5. P7, Connect the brightness sensor
6. 2 *HUB12, 1* HUB08, connect the display
7. P5, Connect the temperature/humidity sensor
8. P11, Connect the IR, by remote control